

# SAAD Tool User Guide

MAC	IP	IP Mode	Model	Software Version	Hardware Version	Identity ID	Primary Server	Register Info	PIC Name	Task Name
68:69:2E:29:0E:1E	192.168.17.74	dhcp	X30	v1.2.4	Vw1.1					
68:69:2E:2A:90:00	192.168.17.55	dhcp	S850	v1.2.4	Vw1.0	5012	192.168.17.100	ok	MP	7
68:69:2E:22:02:49	192.168.17.104	dhcp	SW15	v1.2.4	Vw1.1	5002	192.168.17.100	ok	MP	7
68:69:2E:29:0E:1F	192.168.17.72	dhcp	X30	v1.2.4	Vw1.1	5006	192.168.17.100	ok	MP	7
68:69:2E:4D:0E:1B	192.168.17.197	dhcp	SQ10-CF	v1.0.0	Vw1.1	1009	192.168.17.221	ok	MP	3
68:69:2E:4D:0E:1A	192.168.17.154	dhcp	SQ10-CF	v1.0.0	Vw1.1	1006	192.168.17.221	ok	MP	3
68:69:2E:25:0E:1F	192.168.17.71	dhcp	D40	v1.2.4	Vw1.1	6022	192.168.17.100	ok	MP	7

# Contents

<b><i>Chapter 1 Overview</i></b> .....	<b>3</b>
<b>1.1 Software Introduction</b> .....	<b>3</b>
<b>1.2 Operating Environment</b> .....	<b>3</b>
<b>1.3 Update Instructions</b> .....	<b>3</b>
<b><i>Chapter 2 Operate Software</i></b> .....	<b>3</b>
<b>2.1 Search For Online Devices</b> .....	<b>3</b>
<b>2.2 Device Batch Login</b> .....	<b>4</b>
<b>2.3 Device Configuration Export</b> .....	<b>6</b>
<b>2.4 Device Batch Upgrade</b> .....	<b>7</b>
<b>2.5 Other Features</b> .....	<b>9</b>

# Chapter 1 Overview

## 1.1 Software Introduction

This guide applies to Search Active Audio Device (SAAD) Tool describing how to use this software. Search Active Audio Device Tool can realize the functions of searching and displaying online ZYCOO network devices, exporting devices' configuration, batch login, batch upgrade, etc.

## 1.2 Operating Environment

Search Active Audio Device Tool can be installed on the following platforms:

- Windows OS
- Mac OS
- Linux OS

## 1.3 Update Instructions

The following table describes the updated history of this guide version for reference.

### V1.0

New Features	Navigation	Add Time
Device Search Function	2.1	1/10/2022
Device Batch Login Function	2.2	1/10/2022
Device Configuration Export Function	2.2	1/10/2022
Device Batch Upgrade Function	2.2	1/10/2022

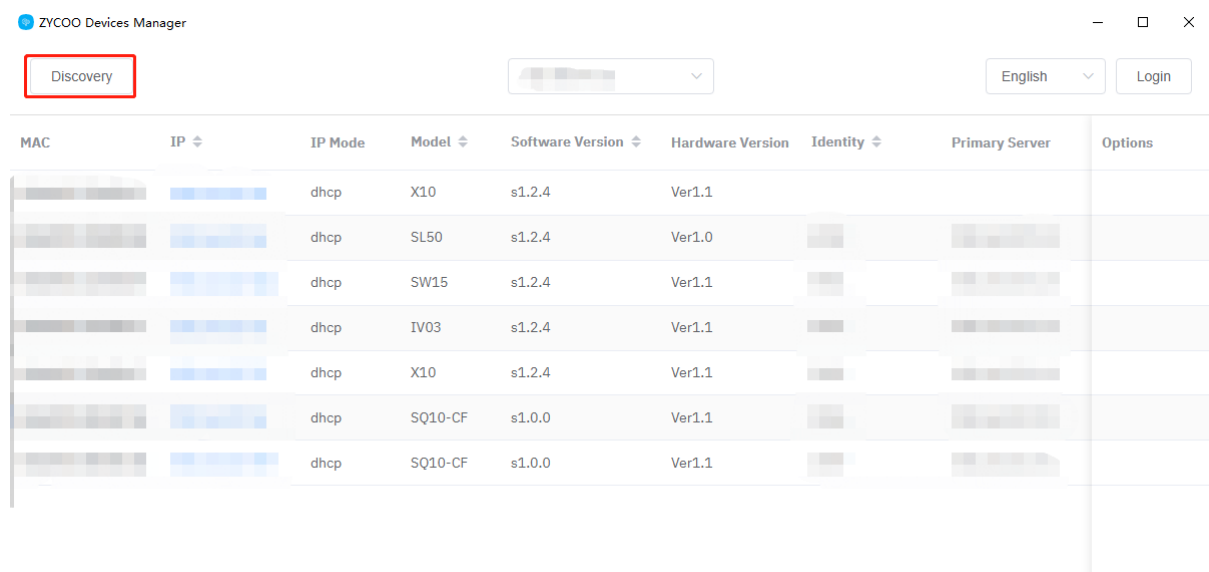
# Chapter 2 Operate Software

## 2.1 Search for Online Devices

Search Active Audio Device Tool can scan the online devices in a local area network or in the same network segment and display the device list on the main interface.

**Steps:**

1. Click the network segment drop-down list in the middle of the interface to select the scanned network segment.
2. Click the **Discovery** button in the upper left corner of the interface.
3. The software will scan the online ZYCOO devices and display their MAC address, IP address, IP acquisition mode, device model, software version, hardware version, main server identity, and primary server IP address on the main interface.



*Figure 1 Search For Online Devices*

## 2.2 Device Batch Login

After Search Active Audio Device Tool discovery is completed, you can enter the username and password of the corresponding device to log in to the specific device in the device list.

**Steps:**

1. As shown in Figure 2, click **Login** in the upper right corner of the main interface.

The screenshot shows the ZYCOO Devices Manager interface. At the top, there is a 'Discovery' button, a language dropdown set to 'English', and a 'Login' button highlighted with a red border. Below this is a table with the following columns: MAC, IP, IP Mode, Model, Software Version, Hardware Version, Identity, Primary Server, and Options. The table contains seven rows of device information.

MAC	IP	IP Mode	Model	Software Version	Hardware Version	Identity	Primary Server	Options
[blurred]	[blurred]	dhcp	X10	s1.2.4	Ver1.1	[blurred]	[blurred]	[blurred]
[blurred]	[blurred]	dhcp	SL50	s1.2.4	Ver1.0	[blurred]	[blurred]	[blurred]
[blurred]	[blurred]	dhcp	SW15	s1.2.4	Ver1.1	[blurred]	[blurred]	[blurred]
[blurred]	[blurred]	dhcp	IV03	s1.2.4	Ver1.1	[blurred]	[blurred]	[blurred]
[blurred]	[blurred]	dhcp	X10	s1.2.4	Ver1.1	[blurred]	[blurred]	[blurred]
[blurred]	[blurred]	dhcp	SQ10-CF	s1.0.0	Ver1.1	[blurred]	[blurred]	[blurred]
[blurred]	[blurred]	dhcp	SQ10-CF	s1.0.0	Ver1.1	[blurred]	[blurred]	[blurred]

*Figure 2 Login-1*

- As shown in Figure 3, after entering the user name and password, you can log in to the devices in the device list individually or in batches. Only the account whose user name and password match the device can perform the backup, upgrade, and other operations.

Login

\* Username

\* Password

Cancel Submit

*Figure 3 Login-2*

Result

---

Total 7 devices, login success 7 devices, failure 0 devices

Close

*Figure 4 Login Successful Popup*

## Result

Total 7 devices, login success 0 devices, failure 7 devices

IP	Model	Status
[REDACTED]	X10	fail
[REDACTED]	SL50	fail
[REDACTED]	SW15	fail
[REDACTED]	IV03	fail
[REDACTED]	X10	fail
[REDACTED]	SQ10-CF	fail
[REDACTED]	SQ10-CF	fail

Close

Figure 5 Login Failed Popup

## 2.3 Device Configuration Export

Search Active Audio Device Tool can export the configuration of device in the device list after logging in the specified device successfully.

### Steps:

1. As shown in Figure 6, after logging in to the device successfully in Chapter 2.2, find the device whose configuration you want to export and click the **Export** button under the **Options** on the right.

ZYCOO Devices Manager

扫描设备 [REDACTED] 简体中文 账号登出 升级

MAC	IP	IP 模式	型号	软件版本	硬件版本	主服务器账号	主服务器	选项
[REDACTED]	[REDACTED]	dhcp	X10	s1.2.4	Ver1.1	[REDACTED]	[REDACTED]	导出
[REDACTED]	[REDACTED]	dhcp	SL50	s1.2.4	Ver1.0	[REDACTED]	[REDACTED]	导出
[REDACTED]	[REDACTED]	dhcp	SW15	s1.2.4	Ver1.1	[REDACTED]	[REDACTED]	导出
[REDACTED]	[REDACTED]	dhcp	IV03	s1.2.4	Ver1.1	[REDACTED]	[REDACTED]	导出
[REDACTED]	[REDACTED]	dhcp	IA03	s1.2.4	Ver1.1	[REDACTED]	[REDACTED]	导出
[REDACTED]	[REDACTED]	dhcp	X10	s1.2.4	Ver1.1	[REDACTED]	[REDACTED]	导出
[REDACTED]	[REDACTED]	dhcp	SQ10-CF	s1.0.0	Ver1.1	[REDACTED]	[REDACTED]	导出
[REDACTED]	[REDACTED]	dhcp	SQ10-CF	s1.0.0	Ver1.1	[REDACTED]	[REDACTED]	导出

Figure 6 Export Configuration

2. As shown in Figure 7, select the path to save the configuration file.

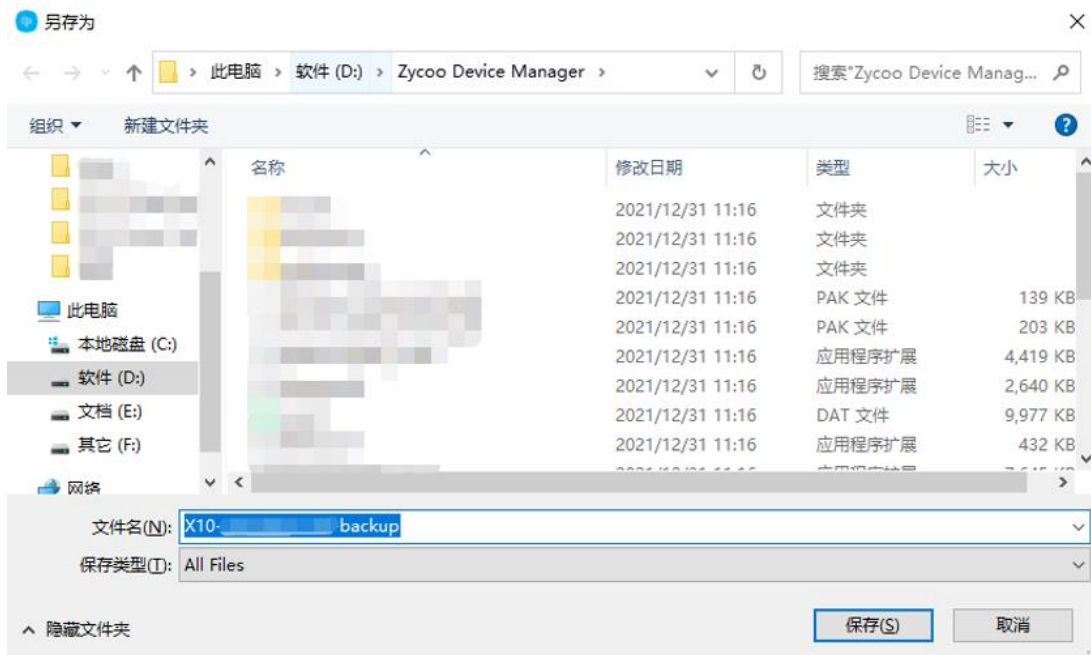


Figure 7 Save Configuration

## 2.4 Device Batch Upgrade

Search Active Audio Device Tool can upgrade the software version of the devices in batches after logging in the device successfully.

### Steps:

1. As shown in Figure 8, after successfully logging in to the account in Chapter 2.2, click **Upgrade** in the upper right corner of the main interface.

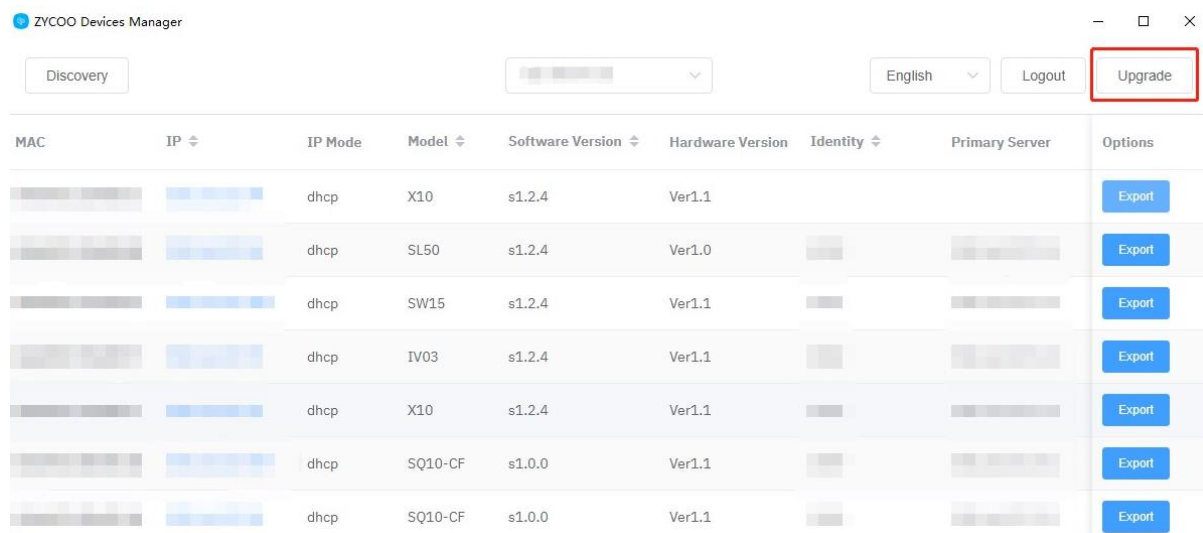


Figure 8 Upgrade Devices

2. Select the device Model to be upgraded in **Type** and click **Next**, as shown in Figure 9. This document takes upgrading X10 devices as an example.

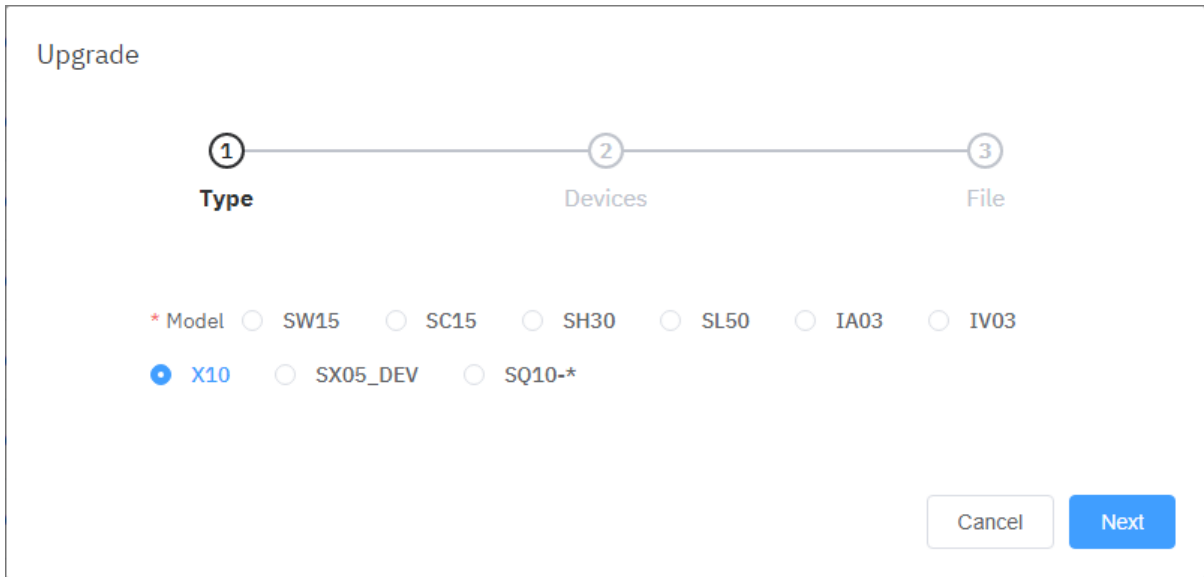


Figure 9 Select Device Type

- As shown in Figure 10, select the specified device to be upgraded in the upgrade device and click **Next**.

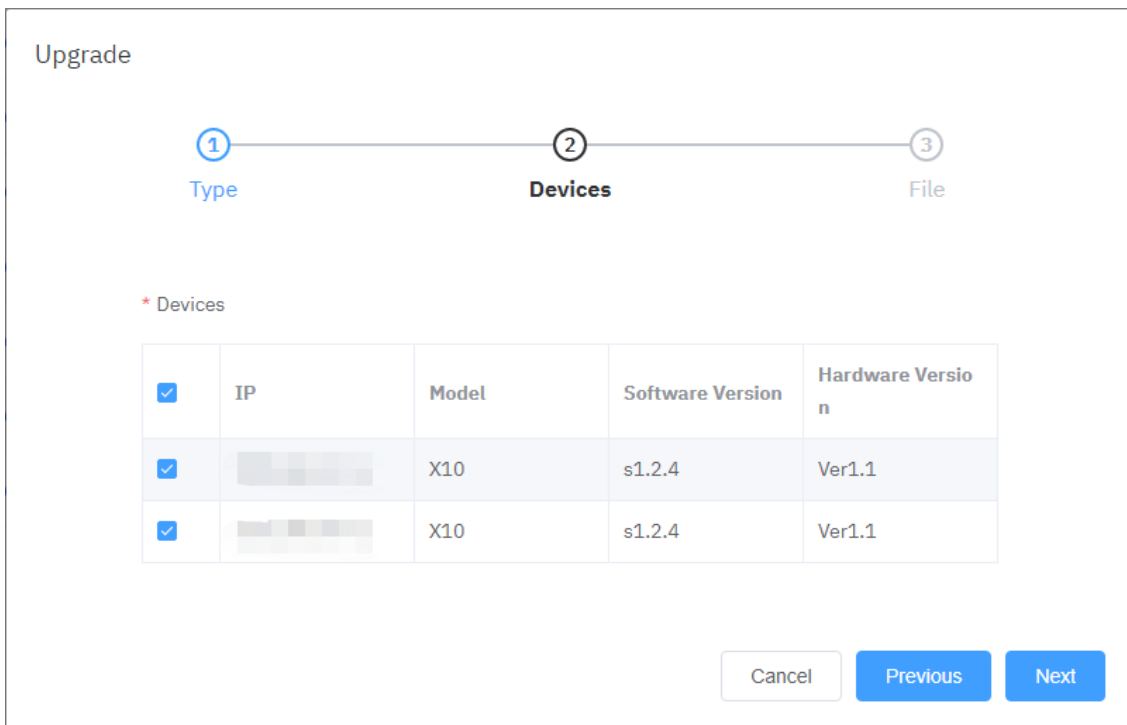


Figure 10 Select Specified Devices

- As shown in Figure 11, in the upgrade file, click **Select File** to upload the upgrade package file, and click **Submit**.



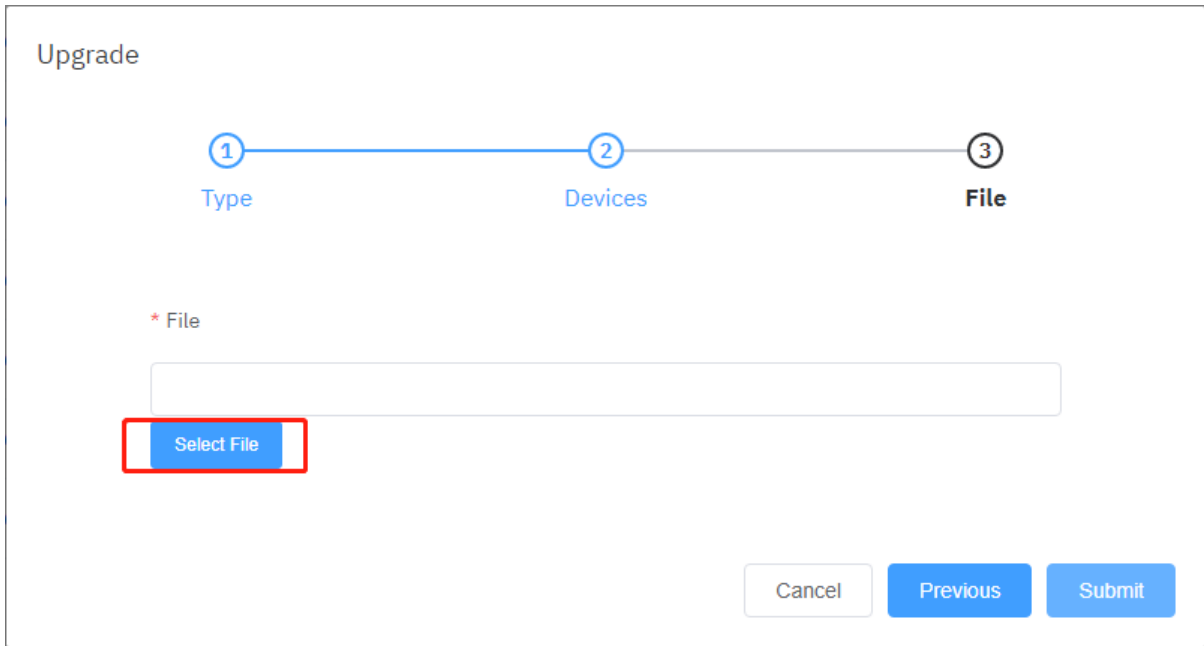


Figure 11 Upload the Upgrade Package

## 2.5 Other Features

With Search Active Audio Device Tool, you can also do quickly access devices, changing language, account settings and other functions.

### Quick Access

As shown in Figure 12, after scanning the device, click the **IP address** of any device in the device list, the software will ask whether to access via the web browser, click **OK** and the browser's login interface will pop up.

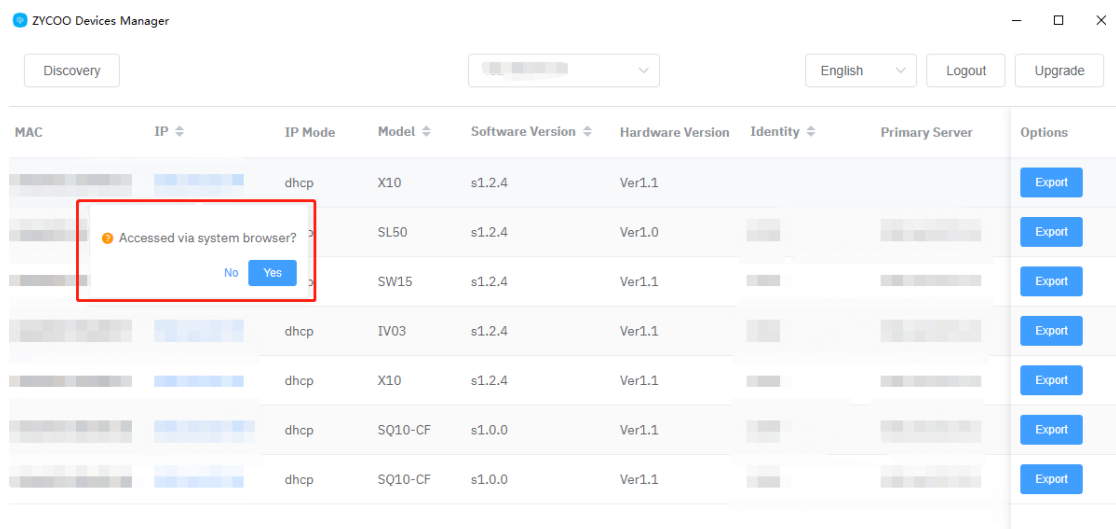


Figure 12 Quick Access

### Change Language

As shown in Figure 13, click the drop-down list in the upper right corner of the main interface to switch between Chinese and English.

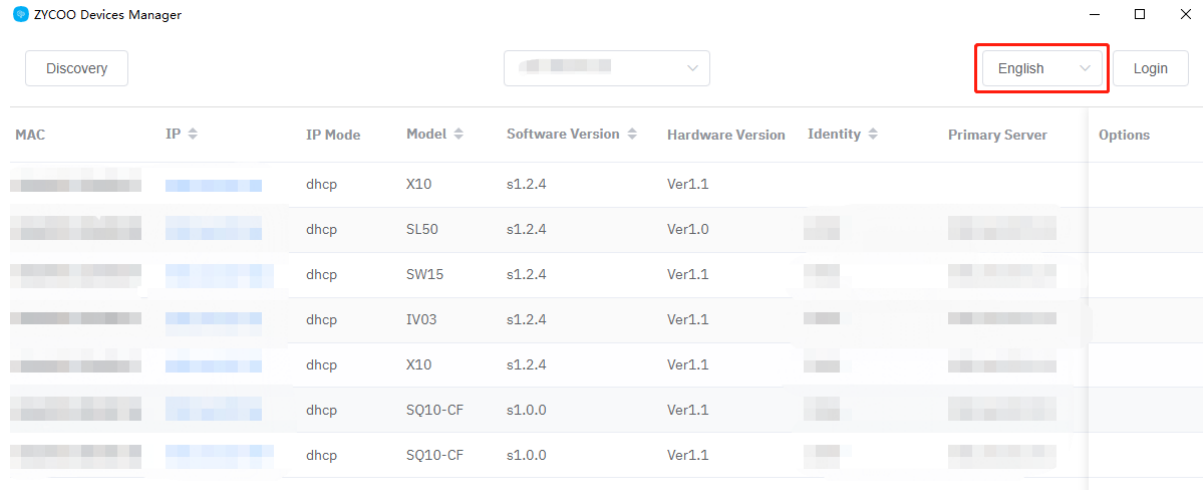


Figure 13 Change Language

@ 2022 Zycoo Co., Ltd. All rights reserved.

[www.zycoo.com](http://www.zycoo.com)

ZYCOO, NEEQ Code 839487, is the leading developer and manufacturer of IP telephony devices and related systems, devoting itself over the past years to R&D powerful and scalable voice over IP (VoIP) solutions that mainly serve the SMEs market and industry filed.

